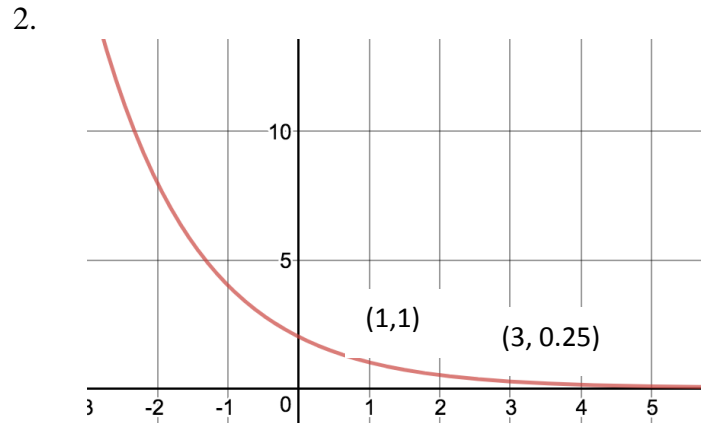
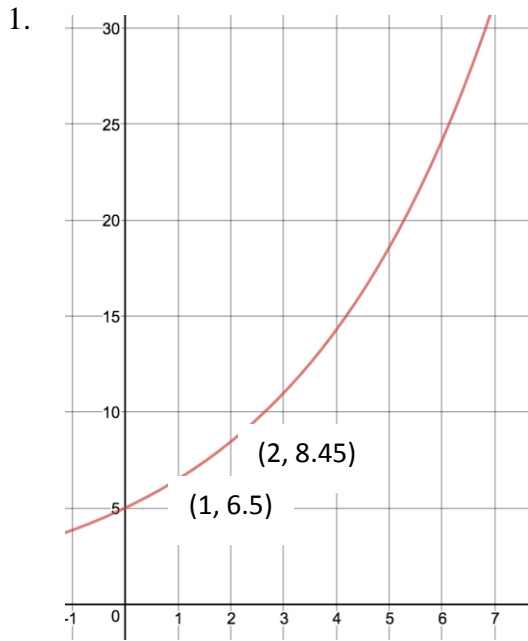


Section 7-2 Continued

For each example below:

- A. Identify the type of function it could be.
- B. On what interval or intervals is the function increasing or decreasing, and which way is the graph concave?
- C. From your experience, what relationship in the real world could be modeled by a function with this shape of graph?
- D. Find the particular equation for the function if the given points are on the graph.
- E. Confirm that your equation gives the graph shown (check on graphing calculator).



3.

